

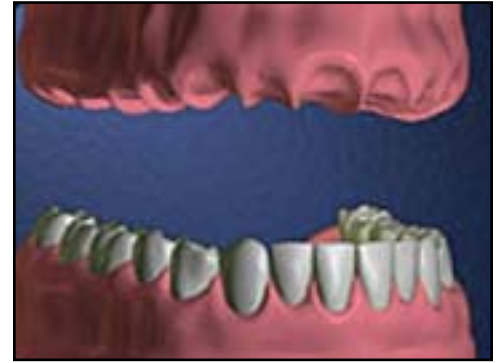


# Immediate Dentures

For your dental health.

If many of your teeth are loose or painful, it may be too late to save them. In most cases, loose or painful teeth are caused by advanced periodontal disease. Periodontal disease also causes bone loss, and if it's not caught in time, because there's too little support for them, your teeth may have to be removed.

Removing your teeth and replacing them with a denture may be the best way to eliminate the infection caused by periodontal disease and restore the health of your mouth. When this is all done on the same day, it's called an immediate denture.



*We sometimes can't save teeth*

## The procedure



*Creating a precise fit*

To begin the process of making a denture, we first take impressions of your mouth. From these impressions, we make precise working models of your mouth, and it's on these models that we make the denture. We'll work with you to select the best color and shape for your new teeth. When your denture is ready, we'll thoroughly numb your mouth and extract your remaining teeth. After your teeth are removed, we'll immediately place your denture.

## What to expect after the procedure

For the first twenty-four hours, your new denture will feel tight because your gums are swollen. As your bone heals over the next six to nine months, your gums will shrink and your denture will feel loose. When this happens, we'll use a temporary lining material to tighten the fit. After the period of healing is complete, we'll either construct an entirely new final denture or send your immediate denture back to the lab to be relined for its final fit.



# Immediate Denture

For your dental health.

## **Adjusting to your new denture**

Some temporary problems are a normal part of adjusting to your new denture. At first, your denture may tip when you chew. You may notice increased salivary flow. It may seem bulky, and you may gag a little. Your tongue will feel crowded, and you may have difficulty speaking. But don't worry, as you get used to your new denture, these problems will go away.

Like learning any new skill, eating with your new denture will at first feel awkward. But with time and practice, you'll make the adjustment. Nobody likes to lose their teeth, but when your teeth are infected, removing them and getting an immediate denture can improve your health, smile, and confidence.



*In time, you'll adjust to dentures*